

Brass 90-degree Angle Elbow Fitting

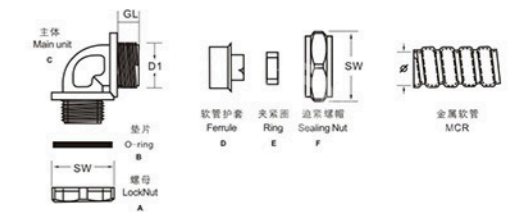
LNE-DWM 黄铜90度接头

技术参数

产品材质	A,C,F部位采用优质黄铜镀镍, B,E部位采用丁腈橡胶制成, D为铁皮压铸制成。
螺纹规格	公制(M), 英制(G)
工作温度	-40°C至+100°C, 短时可达+120°C。
产品特性	接合后和箱体成90度, 优质黄铜镀镍, 外型美观, 结构紧密, 强度高。

Technical Parameters

Product material	A, C, F parts are made of nickel-plated brass. B and E are made of chemigum and D is made of iron.
Specification of thread	Metric, G
Temperature	-40°C ~ +100°C, instantaneously can be +120°C
Property	90 degrees after connected with box, nickel-plated brass material, nice looking, compact structure, high strength.



除以下标准规格外, 可另按需求任意变动大小及螺纹标准, 可定制45度弯头。  
Besides the following specifications, the size and thread standard can be varied at your discretion as per requirements, customizable 45 degree elbow.

订货号 (英制) Order No.(G)	螺纹标准 (英制) Thread Standard(G)	配套金属软管 (公制) Metal Flexibe Conduit(M)	主体长度(mm) Main Unit Length	螺纹长度(mm) Thread Length	螺纹外径(mm) Thread O.D	扳手尺寸(mm) Wrench	包装单位(只/包) Packaging Unit
No.	G	Φ	H	GL	D1	SW	PCS
LNE-DWM90-13-G3/8	G3/8	Φ13	32	8	16.5	26	50
LNE-DWM90-16-G1/2	G1/2	Φ16	36	11	21.3	30	50
LNE-DWM90-20-G3/4	G3/4	Φ20	45	14	26.6	36	50
LNE-DWM90-25-G1	G1	Φ25	52	15	33.4	43	20
LNE-DWM90-32-G1-1/4	G1-1/4	Φ32	60	15	42.1	53	20
LNE-DWM90-38-G1-1/2	G1-1/2	Φ38	68	16	47.8	60	10
LNE-DWM90-51-G2	G2	Φ51	80	18	59.6	74	10
LNE-DWM90-64-G2-1/2	G2-1/2	Φ64	110	22	75.1	90	5
LNE-DWM90-75-G3	G3	Φ75		22	87.8	103	5
LNE-DWM90-100-G4	G4	Φ100		24	113	134	1

LNE-DPC 黄铜端式接头

Brass Straight Fitting

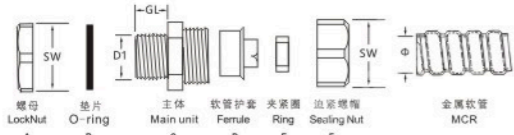


技术参数

产品材质	A,C,F部位优质黄铜镀镍, B,E部分采用丁腈橡胶制成, D为铁皮压铸制成。
工作温度	-40°C至+100°C, 短时可达+120°C。
螺纹规格	公制(M)
产品特性	优质黄铜镀镍制成, 外型美观, 结构紧密, 强度高比一般金属软管接头高。软管护套设计与软管相扣接紧之设计, 装配省时便利, 抗拉力强。可防水、防尘、抗盐、耐酸碱、酒精、油、脂及一般溶剂。

Technical Parameters

Product material	Location A, C and F are made of nickel-plated brass, B, E are made of chemigums, and D is made of iron.
Specification of thread	Metric
Temperature	-40°C ~ +100°C, instantaneously can be +120°C
Property	made of nickel-plated brass, nice looking, compact structure, strength higher than normal metal conduit connector. Ferrule design make conduit connection tightly, easy assembly, and strong pull resistance. Water resistant, dust resistant, inactive with salts, acid and alkali resistance, alcohols, oils and greases as well as general solvent.



除以下标准规格外, 可按任意变动螺纹大小及标准。  
Besides the following specifications, the size and thread standard can be varied at your discretion as per requirements.

订货号 Order No. No.	配套金属软管(公制) Matching metal Hose(M) Φ	配套金属软管(英寸) Matching metal Hose(in.) Φ	螺纹标准(公制) Thread standard(M) M	螺纹长度(mm) Thread Length GL	螺纹外径 (mm) Thread O.D D1	扳手尺寸(mm) Wrench SW	包装单位(只/包) Packaging Unit PCS
LNE-DPC-6-M14	Φ6	3/16	M14×1.5	7	14	18	100
LNE-DPC-8-M16	Φ8	5/16	M16×1.5	8	16	24	100
LNE-DPC-10-M16	Φ10	1/4	M16×1.5	8	16	24	100
LNE-DPC-13-M16	Φ13	3/8	M16×1.5	8	16	26	100
LNE-DPC-13-M20	Φ13	3/8	M20×1.5	10	20	26	100
LNE-DPC-16-M18	Φ16	1/2	M18×1.5	8	18	28	50
LNE-DPC-16-M20	Φ16	1/2	M20×1.5	10	20	28	50
LNE-DPC-16-M24	Φ16	1/2	M24×1.5	10	24	28	50
LNE-DPC-20-M20	Φ20	3/4	M20×1.5	10	20	35	50
LNE-DPC-20-M25	Φ20	3/4	M25×1.5	12	25	35	50
LNE-DPC-20-M27	Φ20	3/4	M27×2.0	12	27	35	50
LNE-DPC-20-M30	Φ20	3/4	M30×2.0	12	30	35	50
LNE-DPC-25-M25	Φ25	1	M25×1.5	12	25	42	20
LNE-DPC-25-M32	Φ25	1	M32×1.5	12	32	42	20
LNE-DPC-25-M33	Φ25	1	M33×2.0	12	33	42	20
LNE-DPC-25-M36	Φ25	1	M36×2.0	12	36	42	20
LNE-DPC-32-M40	Φ32	1-1/4	M40×1.5	14	40	50	20
LNE-DPC-32-M42	Φ32	1-1/4	M42×2.0	14	42	50	20
LNE-DPC-32-M48	Φ32	1-1/4	M48×2.0	14	48	50	20
LNE-DPC-38-M40	Φ38	1-1/2	M40×1.5	14	40	57	10
LNE-DPC-38-M48	Φ38	1-1/2	M48×2.0	14	48	57	10
LNE-DPC-38-M50	Φ38	1-1/2	M50×1.5	14	50	57	10
LNE-DPC-51-M50	Φ51	2	M50×1.5	14	50	70	10
LNE-DPC-51-M60	Φ51	2	M60×2.0	15	60	70	10
LNE-DPC-51-M63	Φ51	2	M63×1.5	15	63	70	10
LNE-DPC-64-M76	Φ64	2-1/2	M76×2.0	20	76	85	5
LNE-DPC-75-M88	Φ75	3	M88×2.0	22	88	100	5
LNE-DPC-100-M114	Φ100	4	M114×2.0	28	114	125	1
LNE-DPC-125-M140	Φ125	5	M140×2.0	29	140	150	1
LNE-DPC-150-M164	Φ150	6	M164×2.0	29	164	180	1

Brass Straight Fitting

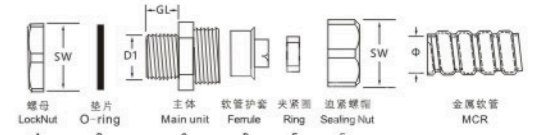
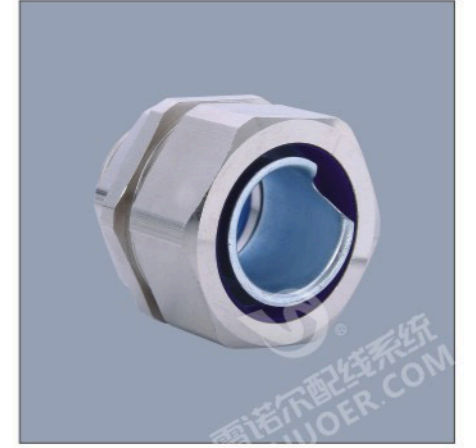
LNE-DPC 黄铜端式接头

技术参数

产品材质	A,C,F部位优质黄铜镀镍, B,E部分采用丁腈橡胶制成, D为铁皮压铸制成。
工作温度	-40°C至+100°C, 短时可达+120°C。
螺纹规格	德制(PG)、英制(G)
产品特性	优质黄铜镀镍制成, 外型美观, 结构紧密, 强度高比一般金属软管接头高。软管护套设计与软管相扣接紧之设计, 装配省时便利, 抗拉力强。可防水、防尘、抗盐、耐酸碱、酒精、油、脂及一般溶剂。

Technical Parameters

Product material	Location A, C and F are made of nickel-plated brass, B, E are made of chemigums, and D is made of iron.
Specification of thread	PG,G
Temperature	-40°C ~ +100°C, instantaneously can be +120°C
Property	made of nickel-plated brass, nice looking, compact structure, strength higher than normal metal conduit connector. Ferrule design make conduit connection tightly, easy assembly, and strong pull resistance. Water resistant, dust resistant, inactive with salts, acid and alkali resistance, alcohols, oils and greases as well as general solvent.



除以下标准规格外, 可按任意变动螺纹大小及标准。  
Besides the following specifications, the size and thread standard can be varied at your discretion as per requirements.

订货号 Order No. No.	配套金属软管(公制) Matching metal Hose(M) Φ	配套金属软管(英寸) Matching metal Hose(in.) Φ	螺纹标准(德制) Thread standard(PG) PG	螺纹长度(mm) Thread Length GL	螺纹外径 (mm) Thread O.D D1	扳手尺寸(mm) Wrench SW	包装单位(只/包) Packaging Unit PCS
LNE-DPC-6-PG7	Φ6	3/16	PG7	8	12.5	18	100
LNE-DPC-8-PG9	Φ8	5/16	PG9	8	15.2	24	100
LNE-DPC-10-PG9	Φ10	1/4	PG9	8	15.2	24	100
LNE-DPC-13-PG11	Φ13	3/8	PG11	8	18.6	26	100
LNE-DPC-13-PG13.5	Φ13	3/8	PG13.5	8	20.4	26	100
LNE-DPC-16-PG13.5	Φ16	1/2	PG13.5	8	20.4	28	50
LNE-DPC-16-PG16	Φ16	1/2	PG16	11	22.5	28	50
LNE-DPC-20-PG21	Φ20	3/4	PG21	14	28.3	32	50
LNE-DPC-25-PG29	Φ25	1	PG29	15	37	42	20
LNE-DPC-32-PG29	Φ32	1-1/4	PG29	15	37	50	20
LNE-DPC-38-PG36	Φ38	1-1/2	PG36	16	47	57	10
LNE-DPC-38-PG42	Φ38	1-1/2	PG42	16	54	57	10
LNE-DPC-51-PG48	Φ51	2	PG48	18	59.3	70	10

订货号 (英制) Order No.(G) No.	螺纹标准(英制) Thread standard(G) G	订货号 (美制) Order No.(NPT) No.	螺纹标准(美制) Thread standard(NPT) NPT	配套金属软管(公制) Matching metal Hose(M) Φ	配套金属软管(英寸) Matching metal Hose(in.) Φ	螺纹长度(mm) Thread Length GL	螺纹外径 (mm) Thread O.D D1	扳手尺寸(mm) Wrench SW	包装单位(只/包) Packaging Unit PCS
LNE-DPC-6-G1/4	G1/4	LNE-DPC-6-NPT1/4	NPT1/4	Φ6	3/16	8	13.2	18	100
LNE-DPC-8-G1/4	G1/4	LNE-DPC-8-NPT1/4	NPT1/4	Φ8	5/16	8	13.2	24	100
LNE-DPC-10-G1/4	G1/4	LNE-DPC-10-NPT1/4	NPT1/4	Φ10	1/4	8	13.2	24	100
LNE-DPC-13-G3/8	G3/8	LNE-DPC-13-NPT3/8	NPT3/8	Φ13	3/8	8	16.5	26	50
LNE-DPC-16-G1/2	G1/2	LNE-DPC-16-NPT1/2	NPT1/2	Φ16	1/2	11	21.3	28	50
LNE-DPC-20-G3/4	G3/4	LNE-DPC-20-NPT3/4	NPT3/4	Φ20	3/4	14	26.6	35	50
LNE-DPC-25-G1	G1	LNE-DPC-25-NPT1	NPT1	Φ25	1	15	33.4	42	20
LNE-DPC-32-G1-1/4	G1-1/4	LNE-DPC-32-NPT1-1/4	NPT1-1/4	Φ32	1-1/4	15	42.1	50	20
LNE-DPC-38-G1-1/2	G1-1/2	LNE-DPC-38-NPT1-1/2	NPT1-1/2	Φ38	1-1/2	16	47.8	57	10
LNE-DPC-51-G2	G2	LNE-DPC-51-NPT2	NPT2	Φ51	2	18	59.6	70	10
LNE-DPC-64-G2-1/2	G2-1/2	LNE-DPC-64-NPT2-1/2	NPT2-1/2	Φ64	2-1/2	22	75.1	85	5
LNE-DPC-75-G3	G3	LNE-DPC-75-NPT3	NPT3	Φ75	3	22	87.8	100	5
LNE-DPC-100-G4	G4	LNE-DPC-100-NPT4	NPT4	Φ100	4	24	113	125	1
LNE-DPC-125-G5	G5	LNE-DPC-125-NPT5	NPT5	Φ125	5			150	1
LNE-DPC-150-G6	G6	LNE-DPC-150-NPT6	NPT6	Φ150	6			180	1

### LNE-DPN-M 黄铜内牙式接头

### Brass Female Thread Straight Fitting

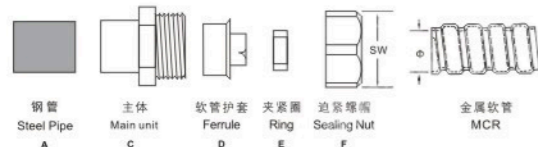


#### 技术参数

产品材质	C,F部位采用优质黄铜镀铬, E部位采用丁腈橡胶制成, D为铁皮压铸制成。
工作温度	-40°C至+100°C, 短时可达+120°C。
螺纹规格	英制(G), 公制螺纹可定做。
产品特性	内螺纹型用于接带螺纹钢管或配有外螺纹的连接件均可。

#### Technical Parameters

Product material	Location C and F are made of nickel-plated brass; D is made of iron; E are made of chemigum iron.
Specification of thread	G (Metric thread can be customized).
Temperature	-40°C ~ +100°C, instantaneously can be +120°C
Property	Female thread type is suitable for connection with threaded steel conduit or external thread connection.



除以下标准规格外, 可按任意变动螺纹大小及标准。  
Besides the following specifications, the size and thread standard can be varied at your discretion as per requirements.

订货号 Order No. No.	配套金属软管(公制) Matching metal Hose(M) Φ	螺纹标准(英制) Thread standard(G) G	扳手尺寸(mm) Wrench SW	包装单位(只/包) Packaging Unit PCS
LNE-DPN-M-13	Φ13	G3/8"	26	50
LNE-DPN-M-16	Φ16	G1/2"	28	50
LNE-DPN-M-20	Φ20	G3/4"	35	50
LNE-DPN-M-25	Φ25	G1"	42	20
LNE-DPN-M-32	Φ32	G1 1/4"	50	10
LNE-DPN-M-38	Φ38	G1 1/2"	57	10
LNE-DPN-M-51	Φ51	G2"	70	10
LNE-DPN-M-64	Φ64	G2 1/2"	85	5
LNE-DPN-M-75	Φ75	G3"	100	5
LNE-DPN-M-100	Φ100	G4"	125	1
LNE-DPN-M-125	Φ125	G5"	150	1
LNE-DPN-M-150	Φ150	G6"	180	1

### Brass Sleeve Type Fitting

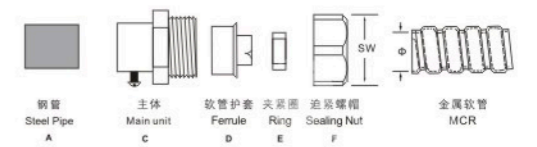
### LNE-DKJ-M 黄铜卡套接头

#### 技术参数

产品材质	C,F部位优质黄铜镀铬, E部位采用丁腈橡胶制成, D为铁皮压铸制成。
工作温度	-40°C至+100°C, 短时可达+120°C。
产品特性	1. 优质黄铜镀铬, 外型美观, 结构紧密, 强度高。 2. 软管护套设计与软管相扣接紧之设计, 装配省时便利, 抗拉力强。 3. 可防水, 防尘, 抗盐, 耐酸碱, 酒精, 油, 脂及一般溶剂。

#### Technical Parameters

Product material	Location C and F are made of nickel-plated brass; E are made of chemigum and D is made of iron.
Temperature	-40°C ~ +100°C, instantaneously can be +120°C
Property	1. nickel-plated brass, beautiful outlook, compact structure and high strength. 2. Flexible conduit sleeve design and flexible conduit buckle sign making assembly easy and time-saving, promising strong pull resistance. 3. Water resistant, dust resistant, inactive with salts, acid and alkali resistance, alcohols, oils and greases as well as general solvent.



除以下标准规格外, 可按任意变动螺纹大小及标准。  
Besides the following specifications, the size and thread standard can be varied at your discretion as per requirements.

订货号 Order No. No.	配套金属软管(公制) Matching metal Hose(M) Φ	螺牙厚钢管 Threaded Thick Steel Conduit		薄钢管 Thin Steel Conduit		扳手尺寸(mm) Wrench SW	包装单位(只/包) Packaging Unit PCS
		公制 M	外径X壁厚 (mm) Outer Diameter x Wall Thickness OxW	公制 M	外径X壁厚 (mm) Outer Diameter x Wall Thickness OxW		
LNE-DKJ-M-10	Φ10	#10		#12	12.76 × 1.60	24	100
LNE-DKJ-M-12	Φ12(13)	#12	17.00 × 2.25	#15	15.87 × 1.60	26	100
LNE-DKJ-M-16	Φ15(16)	#15	21.25 × 2.75	#20	19.05 × 1.80	28	50
LNE-DKJ-M-20	Φ20(19)	#20	26.75 × 2.75	#25	25.40 × 1.80	35	50
LNE-DKJ-M-25	Φ25	#25	33.50 × 3.25	#32	31.75 × 1.80	42	20
LNE-DKJ-M-32	Φ32	#32	42.25 × 3.25	#40	38.10 × 1.80	50	20
LNE-DKJ-M-38	Φ38(40)	#40	48.00 × 3.50	#50	50.80 × 2.00	57	20
LNE-DKJ-M-51	Φ51(50)	#50	60.00 × 3.50	#70	63.50 × 2.50	70	20
LNE-DKJ-M-64	Φ64(70)	#70	75.50 × 3.75	#80	76.20 × 3.20	85	5
LNE-DKJ-M-75	Φ75(80)	#80	88.50 × 4.00			100	5
LNE-DKJ-M-100	Φ100	#100	114.0 × 4.00			125	1
LNE-DKJ-M-125	Φ125	#125	140.0 × 4.00			150	1
LNE-DKJ-M-150	Φ150	#150	165.0 × 4.50			180	1

### LNE-DGJ-M 黄铜自固式接头

### Brass Circlip Self Secured Fitting

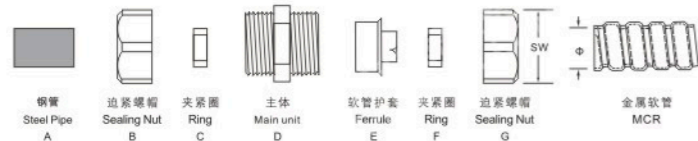


#### 技术参数

<b>产品材质</b>	B,D,G部位采用优质黄铜镀镍, C,F部位采用丁腈橡胶制成, E为铁皮压铸制成。
<b>工作温度</b>	-40°C至+100°C, 短时可达+120°C。
<b>产品特性</b>	1. 优质黄铜镀镍, 外型美观, 结构紧密, 强度高。 2. 软管护套设计与软管相扣接系之设计, 装配省时便利, 抗拉力强。 3. 可防水、防尘、抗盐、耐酸碱、酒精、油、脂及一般溶剂。

#### Technical Parameters

<b>Product material</b>	B,D,G are made of nickel-plated brass, C and F are made of chemigums, E is made of iron.
<b>Temperature</b>	-40°C ~ +100°C, instantaneously can be +120°C
<b>Property</b>	1. nickel-plated brass, beautiful outlook, compact structure and high strength. 2. Flexible conduit sleeve design and flexible conduit buckle sign making assembly easy and time-saving, promising strong pull resistance. 3. Water resistant, dust resistant, inactive with salts, acid and alkali resistance, alcohols, oils and greases as well as general solvent.



钢管 Steel Pipe A, 压紧螺母 Sealing Nut B, 夹紧圈 Ring C, 主体 Main unit D, 软管护套 Ferrule E, 夹紧圈 Ring F, 压紧螺母 Sealing Nut G, 金属软管 MCR

除以下标准规格外, 可按要求任意变动螺纹大小及标准。  
Besides the following specifications, the size and thread standard can be varied at your discretion as per requirements.

订货号 Order No.	配套金属软管(公制) Matching metal Hose(M)	螺牙厚钢管 Threaded Thick Steel Conduit		薄钢管 Thin Steel Conduit		扳手尺寸(mm) Wrench	包装单位(只/包) Packaging Unit
		公制 M	外径X壁厚 (mm) Outer Diameter x Wall Thickness	公制 M	外径X壁厚 (mm) Outer Diameter x Wall Thickness		
No.	Φ	M	OxW	M	OxW	SW	PCS
LNE-DGJ-M-10	Φ10	#10		#12	12.76 × 1.60	24	100
LNE-DGJ-M-12	Φ12(13)	#12	17.00 × 2.25	#15	15.87 × 1.60	26	100
LNE-DGJ-M-16	Φ15(16)	#15	21.25 × 2.75	#20	19.05 × 1.80	28	50
LNE-DGJ-M-20	Φ20(19)	#20	26.75 × 2.75	#25	25.40 × 1.80	35	50
LNE-DGJ-M-25	Φ25	#25	33.50 × 3.25	#32	31.75 × 1.80	42	50
LNE-DGJ-M-32	Φ32	#32	42.25 × 3.25	#40	38.10 × 1.80	50	20
LNE-DGJ-M-38	Φ38(40)	#40	48.00 × 3.50	#50	50.80 × 2.00	57	20
LNE-DGJ-M-51	Φ51(50)	#50	60.00 × 3.50	#70	63.50 × 2.50	70	20
LNE-DGJ-M-64	Φ64(70)	#70	75.50 × 3.75	#80	76.20 × 3.20	85	10
LNE-DGJ-M-75	Φ75(80)	#80	88.50 × 4.00			100	5
LNE-DGJ-M-100	Φ100	#100	114.0 × 4.00			125	5
LNE-DGJ-M-125	Φ125	#125	140.0 × 4.00			150	5
LNE-DGJ-M-150	Φ150	#150	165.0 × 4.50			180	5

### Brass Cable Gland For Plastic Flexible Conduit

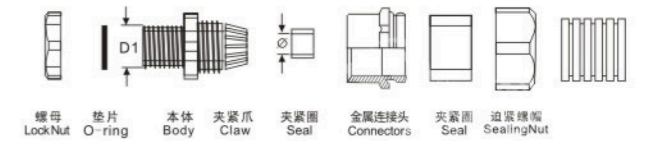
### LNE-MSD-M 黄铜塑料软管电缆接头

#### 技术参数

<b>产品材质</b>	A,C,F,H部位采用优质黄铜镀镍, B,E,G部位采用丁腈橡胶制成, D部分采用尼龙PA66制成。
<b>螺纹规格</b>	公制(M)、德制(PG)、英制(G)及美制(NPT)。
<b>工作温度</b>	-40°C至+100°C, 短时可达+120°C。
<b>产品特性</b>	塑料软管接头配套锁式电缆接头为一体, 防电线松动, 拆卸只需拔插无需工具, 大大缩减了安装时间, 夹紧电缆范围大, 抗拉力特强, 产品有耐酸碱、耐化学物质与一般溶剂等抗腐蚀性特性, 可防水、防尘全方位的尺寸可广泛应用于各个领域的出线孔上。

#### Technical Parameters

<b>Product material</b>	A,C,F,H parts are Nickel-plated brass, B, E and G are Chemigum material, Part D is UL approved Nylon Pa66
<b>Specification of thread</b>	Metric, PG, G, NPT
<b>Temperature</b>	-40°C ~ +100°C, instantaneously can be +120°C
<b>Property</b>	Cable Glands plus conduit connector as whole one, anti-loose for cable, Assembly and discharging work easy by just plugging without tools, greatly reducing the installation time. it can fit with wide range of fastening cable, feature with high tensile strength, acid and alkali resistant, corrosion resistant to generally chemicals and solvents, waterproof, dustproof, widely applied with various types of outlet hole.



螺母 Lock Nut A, 垫片 O-ring B, 本体 Body C, 夹紧爪 Claw D, 夹紧圈 Seal E, 金属接头 Connectors F, 夹紧圈 Seal G, 压紧螺母 Sealing Nut H

除以下标准规格外, 可按要求任意变动螺纹大小及标准。  
Besides the following specifications, the size and thread standard can be varied at your discretion as per requirements.

订货号 Order No.	螺纹标准(公制) Thread standard(M)	电缆外径(mm) Cable Diameter	适配软管 Suitable Flexible Conduit	螺纹长度(mm) Thread Length	扳手尺寸(mm) Wrench	包装单位(只/包) Packaging Unit
LNE-MSD-M-M12-10.0	M12x1.5	3-6.5	AD10.0	6.0	16.0	50
LNE-MSD-M-M16-13.0	M16x1.5	4-8	AD13.0	7.0	18.0	50
LNE-MSD-M-M16-15.8	M16x1.5	4-8	AD15.8	7.0	18.0	50
LNE-MSD-M-M18-15.8	M18x1.5	6-10	AD15.8	8.0	20.0	50
LNE-MSD-M-M20-15.8	M20x1.5	8-12	AD15.8	8.0	22.0	50
LNE-MSD-M-M20-18.5	M20x1.5	8-12	AD18.5	8.0	22.0	50
LNE-MSD-M-M20-21.2	M20x1.5	8-12	AD21.2	8.0	22.0	25
LNE-MSD-M-M25-21.2	M25x1.5	10-14	AD21.2	10.0	28.0	25
LNE-MSD-M-M25-28.5	M25x1.5	10-14	AD28.5	10.0	28.0	25
LNE-MSD-M-M27-28.5	M27x1.5	13-18	AD28.5	11.0	30.0	25
LNE-MSD-M-M32-34.5	M32x1.5	15-22	AD34.5	11.0	36.0	20
LNE-MSD-M-M40-34.5	M40x1.5	18-25	AD34.5	12.0	45.0	20
LNE-MSD-M-M40-42.5	M40x1.5	18-25	AD42.5	12.0	45.0	10
LNE-MSD-M-M50-54.5	M50x1.5	26-32	AD54.5	13.0	56.0	5
LNE-MSD-M-M63-54.5	M63x1.5	37-44	AD54.5	14.0	70.0	5

LNE-MBG-M 黄铜金属软管电缆接头

Brass Cable Gland For Metal Flexible Conduit

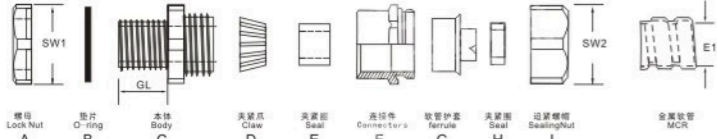


技术参数

产品材质	A.C.F.I部分采用优质黄铜镀镍, D部分采用尼龙PA66制成, B.E.H采用丁腈橡胶,G为铁皮压铸制成。
螺纹规格	公制(M)
工作温度	-40°C至+100°C, 短时可达+120°C。
产品特性	1.外型美观, 结构紧密, 强度更高。 2.软管护套设计与软管相扣接紧之设计, 配合近紧头装配省时便利, 抗拉力强。 3.可防水、防尘、抗盐、耐酸碱、酒精、油、脂及一般溶剂。

Technical Parameters

Product material	A,C,F,I parts are Nickel-plated brass, D part is PA66, B,E,H parts are NBR,G is made of iron.
Specification of thread	Metric
Temperature	-40°C ~ +100°C, instantaneously can be +120°C
Property	Nice shape, compact structure, higher intensity; Flexible conduit Ferrule design make conduit connection tightly, easy assembly, and strong pull resistance. Water resistant, dust resistant, inactive with salts, acid and alkali resistance, alcohols, oils and greases as well as general solvent.



除以下标准规格外, 可按要求任意变动螺纹大小及标准。  
Besides the following specifications, the size and thread standard can be varied at your discretion as per requirements.

订货号 Order No.	配套金属软管 Matching metal Hose		螺纹标准(公制) Thread standard(M)	电缆外径 (mm) Cable Diameter	螺纹长度(mm) Thread Length	扳手尺寸(mm) Wrench		包装单位(只/包) Packaging Unit
	公制(M)	英寸(in.)				SW1	SW2	
No.	Φ	Φ	M	E1	GL	SW1	SW2	PCS
LNE-MBG-M16x1.5-10	Φ10	1/4"	M16x1.5	4-8	7.0	24	20	50
LNE-MBG-M20x1.5-13	Φ13	3/8"	M20x1.5	8-12	8.0	26	24	50
LNE-MBG-M20x1.5-16	Φ16	1/2"	M20x1.5	8-12	8.0	28	24	50
LNE-MBG-M24x1.5-16	Φ16	1/2"	M24x1.5	10-14	10.0	28	28	50
LNE-MBG-M25x1.5-20	Φ20	3/4"	M25x1.5	11-16	11.0	35	30	25
LNE-MBG-M32x1.5-25	Φ25	1"	M32x1.5	15-22	11.0	42	35	20
LNE-MBG-M40x1.5-32	Φ32	1 1/4"	M40x1.5	22-28	12.0	50	45	10
LNE-MBG-M50x1.5-38	Φ38	1 1/2"	M50x1.5	28-36	13.0	57	55	10
LNE-MBG-M63x1.5-51	Φ51	2"	M63x1.5	37-44	14.0	70	70	5
LNE-MBG-M27x2.0-20	Φ20	3/4"	M27x2.0	13-18	11.0	35	32	25
LNE-MBG-M30x2.0-20	Φ20	3/4"	M30x2.0	14-20	11.0	35	35	25
LNE-MBG-M33x2.0-25	Φ25	1"	M33x2.0	15-22	11.0	42	37	20
LNE-MBG-M36x2.0-25	Φ25	1"	M36x2.0	18-25	11.0	42	40	20
LNE-MBG-M42x2.0-32	Φ32	1 1/4"	M42x2.0	24-30	13.0	50	50	10
LNE-MBG-M48x2.0-38	Φ38	1 1/2"	M48x2.0	25-32	13.0	57	53	10
LNE-MBG-M54x2.0-38	Φ38	1 1/2"	M54x2.0	32-38	14.0	57	57	10
LNE-MBG-M60x2.0-51	Φ51	2"	M60x2.0	37-44	14.0	70	70	5
LNE-MBG-M64x2.0-51	Φ51	2"	M64x2.0	37-44	14.0	70	70	5
LNE-MBG-M72x2.0-64	Φ64	2 1/2"	M72x2.0	42-52	15.0	85	80	5
LNE-MBG-M76x2.0-64	Φ64	2 1/2"	M76x2.0	48-55	17.0	85	85	5

Brass Cable Gland For Metal Flexible Conduit

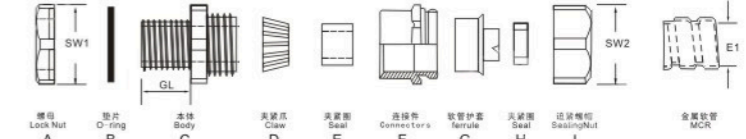
LNE-MBG-M 黄铜金属软管电缆接头

技术参数

产品材质	A.C.F.I部分采用优质黄铜镀镍, D部分采用尼龙PA66制成, B.E.H采用丁腈橡胶, G为铁皮压铸制成。
螺纹规格	德制(PG)、英制(G)、美制(NPT)
工作温度	-40°C至+100°C, 短时可达+120°C。
产品特性	1.外型美观, 结构紧密, 强度更高。 2.软管护套设计与软管相扣接紧之设计, 配合近紧头装配省时便利, 抗拉力强。 3.可防水、防尘、抗盐、耐酸碱、酒精、油、脂及一般溶剂。

Technical Parameters

Product material	A,C,F,I parts are Nickel-plated brass, D part is PA66, B,E,H parts are NBR,G is made of iron.
Specification of thread	PG,G,NPT
Temperature	-40°C ~ +100°C, instantaneously can be +120°C
Property	Nice shape, compact structure, higher intensity; Flexible conduit Ferrule design make conduit connection tightly, easy assembly, and strong pull resistance. Water resistant, dust resistant, inactive with salts, acid and alkali resistance, alcohols, oils and greases as well as general solvent.



除以下标准规格外, 可按要求任意变动螺纹大小及标准。  
Besides the following specifications, the size and thread standard can be varied at your discretion as per requirements.

订货号 Order No.	配套金属软管 Matching metal Hose		螺纹标准(德制) Thread standard(PG)	电缆外径 (mm) Cable Diameter	螺纹长度(mm) Thread Length	扳手尺寸(mm) Wrench		包装单位(只/包) Packaging Unit
	公制(M)	英寸(in.)				SW1	SW2	
No.	Φ	Φ	PG	E1	GL	SW1	SW2	PCS
LNE-MBG-M-PG13.5	Φ16	1/2"	PG13.5	8-12	8.0	28	26	50
LNE-MBG-M-PG16	Φ16	1/2"	PG16	10-14	10.0	28	28	50
LNE-MBG-M-PG21	Φ20	3/4"	PG21	13-18	11.0	35	32	25
LNE-MBG-M-PG29	Φ25	1"	PG29	18-25	11.0	42	42	20
LNE-MBG-M-PG36	Φ32	1 1/4"	PG36	25-32	12.0	50	42	10
LNE-MBG-M-PG42	Φ38	1 1/2"	PG42	32-38	13.0	57	55	10
LNE-MBG-M-PG48	Φ51	2"	PG48	37-44	14.0	70	70	5

订货号 Order No.	配套金属软管 Matching metal Hose		螺纹标准(英制) Thread standard(G)	电缆外径 (mm) Cable Diameter	螺纹长度(mm) Thread Length	扳手尺寸(mm) Wrench		包装单位(只/包) Packaging Unit
	公制(M)	英寸(in.)				SW1	SW2	
No.	Φ	Φ	G	E1	GL	SW1	SW2	PCS
LNE-MBG-M-G1/2	Φ16	1/2"	G1/2"	8-12	8.0	28	40	50
LNE-MBG-M-G3/4	Φ20	3/4"	G3/4"	13-18	11.0	35	30	25
LNE-MBG-M-G1	Φ25	1"	G1"	15-22	11.0	42	35	20
LNE-MBG-M-G1 1/4	Φ32	1 1/4"	G1 1/4"	22-30	12.0	50	50	10
LNE-MBG-M-G1 1/2	Φ38	1 1/2"	G1 1/2"	25-32	13.0	57	55	10
LNE-MBG-M-G2	Φ51	2"	G2"	37-44	14.0	70	70	5

### LNE-MKG 黄铜圆形闷盖

### Brass Circle End Cap

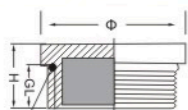
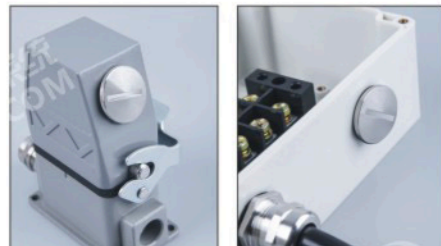


#### 技术参数

产品材质	采用优质黄铜镀镍。
螺纹规格	公制(M)、德制(PG), 其他螺纹规格可定制。
工作温度	-40°C至+100°C, 短时可达+120°C。

#### Technical Parameters

Product material	high quality Nickel-plated brass.
Specification of thread	Metric, PG
Temperature	-40°C ~ +100°C, instantaneously can be +120°C



防水圈 Sealing ring

除以下标准规格外, 可按任意变动螺纹大小及标准。  
Besides the following specifications, the size and thread standard can be varied at your discretion as per requirements.

订货号 Order No.	螺纹标准(公制) Thread standard(M)	高度 (mm) Height	螺纹长度(mm) Thread Length	圆型外径(mm) Circle Max O.D.	包装单位(只/包) Packaging Unit
No.	M	H	GL	Φ	PCS
LNE-MKG-M12×1.5	M12×1.5	8.0	5.0	14	100
LNE-MKG-M16×1.5	M16×1.5	9.0	6.0	18	100
LNE-MKG-M18×1.5	M18×1.5	10.0	6.0	20	100
LNE-MKG-M20×1.5	M20×1.5	10.0	6.0	22	100
LNE-MKG-M22×1.5	M22×1.5	10.0	7.0	24	100
LNE-MKG-M24×1.5	M24×1.5	11.0	7.0	27	100
LNE-MKG-M25×1.5	M25×1.5	11.0	7.0	27	100
LNE-MKG-M32×1.5	M32×1.5	11.0	7.0	35	50
LNE-MKG-M36×1.5	M36×2.0	13.0	8.0	40	50
LNE-MKG-M40×1.5	M40×1.5	13.0	8.0	45	20
LNE-MKG-M48×1.5	M48×2.0	13.0	8.0	50	20
LNE-MKG-M50×1.5	M50×1.5	13.0	9.0	55	20
LNE-MKG-M54×1.5	M54×1.5	15.0	10.0	57	20
LNE-MKG-M63×1.5	M63×1.5	17.0	10.0	65	20

订货号 Order No.	螺纹标准(德制) Thread standard(PG)	高度 (mm) Height	螺纹长度(mm) Thread Length	圆型外径(mm) Circle Max O.D.	包装单位(只/包) Packaging Unit
No.	PG	H	GL	Φ	PCS
LNE-MKG-PG7	PG7	8.0	5.0	14	100
LNE-MKG-PG9	PG9	9.0	6.0	18	100
LNE-MKG-PG11	PG11	10.0	6.0	20	100
LNE-MKG-PG13.5	PG13.5	10.0	7.0	23	100
LNE-MKG-PG16	PG16	10.0	7.0	24	100
LNE-MKG-PG21	PG21	11.0	7.0	30	50
LNE-MKG-PG29	PG29	13.0	8.0	40	50
LNE-MKG-PG36	PG36	13.0	8.0	50	20
LNE-MKG-PG42	PG42	15.0	9.0	57	20
LNE-MKG-PG48	PG48	17.0	10.0	65	20

### Brass Hexagonal End Cap

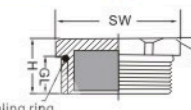
### LNE-HKG 黄铜六角闷盖

#### 技术参数

产品材质	采用优质黄铜镀镍。
螺纹规格	公制(M)、德制(PG), 其他螺纹规格可定制。
工作温度	-40°C至+100°C, 短时可达+120°C。

#### Technical Parameters

Product material	high quality Nickel-plated brass.
Specification of thread	Metric, PG
Temperature	-40°C ~ +100°C, instantaneously can be +120°C



防水圈 Sealing ring

除以下标准规格外, 可按任意变动螺纹大小及标准。  
Besides the following specifications, the size and thread standard can be varied at your discretion as per requirements.

订货号 Order No.	螺纹标准(公制) Thread standard(M)	高度 (mm) Height	螺纹长度(mm) Thread Length	扳手尺寸(mm) Wrench	包装单位(只/包) Packaging Unit
No.	M	H	GL	SW	PCS
LNE-HKG-M12×1.5	M12×1.5	8.0	5.0	14.0	100
LNE-HKG-M16×1.5	M16×1.5	9.0	6.0	18.0	100
LNE-HKG-M18×1.5	M18×1.5	10.0	6.0	20.0	100
LNE-HKG-M20×1.5	M20×1.5	10.0	6.0	22.0	100
LNE-HKG-M22×1.5	M22×1.5	10.0	7.0	24.0	100
LNE-HKG-M24×1.5	M24×1.5	11.0	7.0	26.0	100
LNE-HKG-M25×1.5	M25×1.5	11.0	7.0	27.0	100
LNE-HKG-M32×1.5	M32×1.5	11.0	7.0	34.0	50
LNE-HKG-M36×1.5	M36×2.0	13.0	8.0	40.0	50
LNE-HKG-M40×1.5	M40×1.5	13.0	8.0	42.0	20
LNE-HKG-M48×1.5	M48×2.0	13.0	8.0	52.0	20
LNE-HKG-M50×1.5	M50×1.5	13.0	9.0	54.0	20
LNE-HKG-M54×1.5	M54×1.5	15.0	10.0	60.0	20
LNE-HKG-M63×1.5	M63×1.5	17.0	10.0	70.0	20

订货号 Order No.	螺纹标准(德制) Thread standard(PG)	高度 (mm) Height	螺纹长度(mm) Thread Length	扳手尺寸(mm) Wrench	包装单位(只/包) Packaging Unit
No.	PG	H	GL	SW	PCS
LNE-HKG-PG7	PG7	5.0	8.0	14.0	100
LNE-HKG-PG9	PG9	6.0	9.0	18.0	100
LNE-HKG-PG11	PG11	6.0	10.0	20.0	100
LNE-HKG-PG13.5	PG13.5	7.0	10.0	22.0	100
LNE-HKG-PG16	PG16	7.0	10.0	24.0	100
LNE-HKG-PG21	PG21	7.0	11.0	30.0	50
LNE-HKG-PG29	PG29	8.0	13.0	40.0	50
LNE-HKG-PG36	PG36	8.0	13.0	50.0	20
LNE-HKG-PG42	PG42	9.0	15.0	60.0	20
LNE-HKG-PG48	PG48	10.0	17.0	65.0	20

### LNE-M-BJ 黄铜扩径接头

### Brass Enlarger

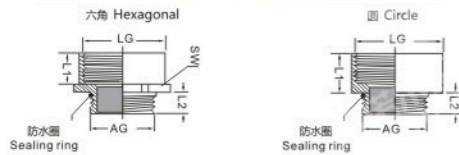
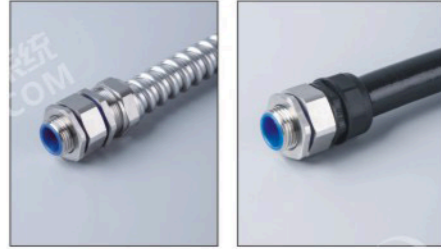


#### 技术参数

产品材质	采用优质黄铜镀镍。
螺纹规格	公制(M)、德制(PG)
产品特性	小螺纹转大螺纹。
工作温度	-40°C至+100°C, 短时可达+120°C。

#### Technical Parameters

Product material	high quality Nickel-plated brass.
Specification of thread	Metric, PG
Property	Small thread convert to big thread.
Temperature	-40°C ~ +100°C, instantaneously can be +120°C



除以下标准规格外, 可按任意变动螺纹大小及标准。  
Besides the following specifications, the size and thread standard can be varied at your discretion as per requirements.

#### 公制螺纹 Metric Thread

订货号	外螺纹(mm)	内螺纹(mm)	内螺纹长度 (mm)	外螺纹长度 (mm)	扳手尺寸(mm)	
Order No.	Outside Thread	Female Thread	Thread Length	Thread Length	Wrench	
六角 Hexagonal	圆 Circle	AG	LG	L1	L2	SW
LNE-M-BJ-M12-M16	LNE-M-BJ-M12-M16Y	M12×1.5	M16×1.5	10.0	5.0	18
LNE-M-BJ-M16-M20	LNE-M-BJ-M16-M20Y	M16×1.5	M20×1.5	12.0	6.0	22
LNE-M-BJ-M20-M25	LNE-M-BJ-M20-M25Y	M20×1.5	M25×1.5	13.0	8.0	27
LNE-M-BJ-M25-M32	LNE-M-BJ-M25-M32Y	M25×1.5	M32×1.5	15.0	7.5	35
LNE-M-BJ-M32-M40	LNE-M-BJ-M32-M40Y	M32×1.5	M40×1.5	15.0	10.0	45
LNE-M-BJ-M40-M50	LNE-M-BJ-M40-M50Y	M40×1.5	M50×1.5	16.0	10.0	55
LNE-M-BJ-M50-M63	LNE-M-BJ-M50-M63Y	M50×1.5	M63×1.5	16.0	9.0	65

#### 德制螺纹 PG Thread

订货号	外螺纹(mm)	内螺纹(mm)	内螺纹长度 (mm)	外螺纹长度 (mm)	扳手尺寸(mm)	
Order No.	Outside Thread	Female Thread	Thread Length	Thread Length	Wrench	
六角 Hexagonal	圆 Circle	AG	LG	L1	L2	SW
LNE-M-BJ-PG7-PG9	LNE-M-BJ-PG7-PG9Y	PG7	PG9	10.0	5.0	17
LNE-M-BJ-PG9-PG11	LNE-M-BJ-PG9-PG11Y	PG9	PG11	12.0	6.5	20
LNE-M-BJ-PG11-PG13.5	LNE-M-BJ-PG11-PG13.5Y	PG11	PG13.5	12.0	6.0	22
LNE-M-BJ-PG13.5-PG16	LNE-M-BJ-PG13.5-PG16Y	PG13.5	PG16	13.0	6.5	24
LNE-M-BJ-PG16-PG21	LNE-M-BJ-PG16-PG21Y	PG16	PG21	14.0	6.5	30
LNE-M-BJ-PG21-PG29	LNE-M-BJ-PG21-PG29Y	PG21	PG29	15.0	8.0	40
LNE-M-BJ-PG29-PG36	LNE-M-BJ-PG29-PG36Y	PG29	PG36	17.0	8.0	50
LNE-M-BJ-PG36-PG42	LNE-M-BJ-PG36-PG42Y	PG36	PG42	16.0	9.0	57
LNE-M-BJ-PG42-PG48	LNE-M-BJ-PG42-PG48Y	PG42	PG48	16.0	9.0	65

### Brass Reducer

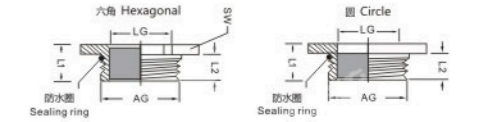
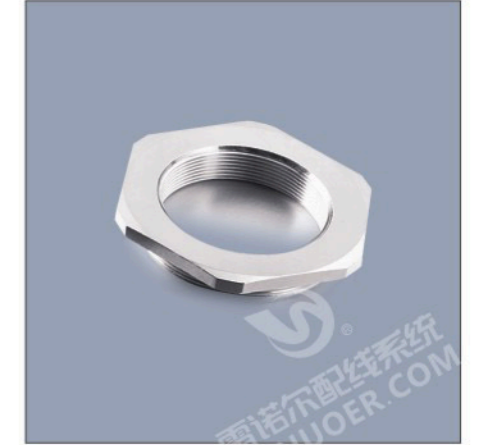
### LNE-M-KJ 黄铜缩径接头

#### 技术参数

产品材质	采用优质黄铜镀镍。
螺纹规格	公制(M)、德制(PG)
产品特性	大螺纹转小螺纹。
工作温度	-40°C至+100°C, 短时可达+120°C。

#### Technical Parameters

Product material	high quality Nickel-plated brass.
Specification of thread	Metric, PG
Property	Big thread convert to small thread.
Temperature	-40°C ~ +100°C, instantaneously can be +120°C



除以下标准规格外, 可按任意变动螺纹大小及标准。  
Besides the following specifications, the size and thread standard can be varied at your discretion as per requirements.

#### 公制螺纹 Metric Thread

订货号	外螺纹(mm)	内螺纹(mm)	内螺纹长度 (mm)	外螺纹长度 (mm)	扳手尺寸(mm)	
Order No.	Outside Thread	Female Thread	Thread Length	Thread Length	Wrench	
六角 Hexagonal	圆 Circle	AG	LG	L1	L2	SW
LNE-M-KJ-M16-M12	LNE-M-KJ-M16-M12Y	M16×1.5	M12×1.5	9.0	6.0	18
LNE-M-KJ-M20-M16	LNE-M-KJ-M20-M16Y	M20×1.5	M16×1.5	10.0	7.0	22
LNE-M-KJ-M25-M20	LNE-M-KJ-M25-M20Y	M25×1.5	M20×1.5	10.0	7.0	27
LNE-M-KJ-M32-M25	LNE-M-KJ-M32-M25Y	M32×1.5	M25×1.5	11.5	8.0	35
LNE-M-KJ-M40-M32	LNE-M-KJ-M40-M32Y	M40×1.5	M32×1.5	13.0	9.0	42
LNE-M-KJ-M50-M40	LNE-M-KJ-M50-M40Y	M50×1.5	M40×1.5	14.0	9.0	57
LNE-M-KJ-M63-M50	LNE-M-KJ-M63-M50Y	M63×1.5	M50×1.5	14.0	11.0	65

#### 德制螺纹 PG Thread

订货号	外螺纹(mm)	内螺纹(mm)	内螺纹长度 (mm)	外螺纹长度 (mm)	扳手尺寸(mm)	
Order No.	Outside Thread	Female Thread	Thread Length	Thread Length	Wrench	
六角 Hexagonal	圆 Circle	AG	LG	L1	L2	SW
LNE-M-KJ-PG9-PG7	LNE-M-KJ-PG9-PG7Y	PG9	PG7	9.0	6.0	17
LNE-M-KJ-PG11-PG9	LNE-M-KJ-PG11-PG9Y	PG11	PG9	11.0	7.0	20
LNE-M-KJ-PG13.5-PG11	LNE-M-KJ-PG13.5-PG11Y	PG13.5	PG11	10.0	7.0	22
LNE-M-KJ-PG16-PG13.5	LNE-M-KJ-PG16-PG13.5Y	PG16	PG13.5	11.0	7.0	24
LNE-M-KJ-PG21-PG16	LNE-M-KJ-PG21-PG16Y	PG21	PG16	11.0	7.0	30
LNE-M-KJ-PG29-PG21	LNE-M-KJ-PG29-PG21Y	PG29	PG21	12.5	8.0	40
LNE-M-KJ-PG36-PG29	LNE-M-KJ-PG36-PG29Y	PG36	PG29	13.0	9.0	50
LNE-M-KJ-PG42-PG36	LNE-M-KJ-PG42-PG36Y	PG42	PG36	15.0	9.0	57
LNE-M-KJ-PG48-PG42	LNE-M-KJ-PG48-PG42Y	PG48	PG42	15.0	10.0	65